

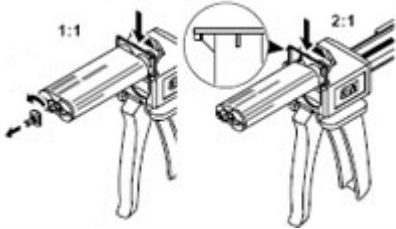
Application Instructions for Av-DEC® Two Part Sealants-50cc Cartridges

NOTE: Read this specification completely before sealant application; please contact Av-DEC® with questions or concerns.

I. Surface Preparation

- Inspect surface areas that will contact the Av-DEC® sealant materials for corrosion and take corrective action based upon current maintenance manual requirements.
- Remove any previously applied adhesives or sealants.
- Surfaces that will come in contact with the Av-DEC® sealant material shall be wiped with a clean, solvent dampened cloth, followed immediately by wiping with a clean dry cloth to remove any remaining paint, dust, oil, grease, fingerprints, and other contamination prior to the Av-DEC® sealant material installation.

II. Initial Set-up



- Check the expiration date on the outer packaging to ensure that the material has not exceeded the shelf life.
- Rotate cartridge cap ¼-turn counterclockwise and remove. Remove rubber plug from end of cartridge, if not removed with the cap.
- Attach mixing straw (two straws provided) to cartridge by inserting over cartridge tip and rotating ¼-turn clockwise until locked.

*****WARNING*****

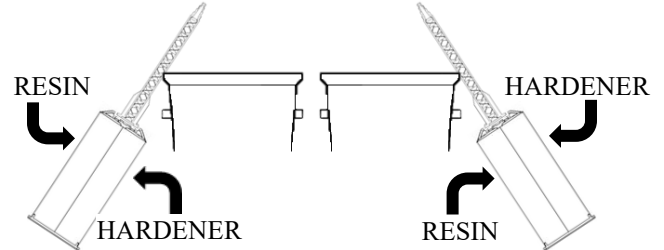
DO NOT MODIFY MIXING STRAW AS IMPROPER MIXING MAY RESULT

- Raise cartridge retainer at the top front of the sealant dispenser (Av-DEC® PN UG981108-01 or equivalent).
- Insert dual plunger (supplied with dispenser) into dispenser. Ensure notched (ratchet) surface of plunger faces down, toward trigger. Raise metal trigger release latch at back of dispenser and push plunger toward handle until it stops.
- Place rectangular flange of dual cartridge into grooves on top of dispenser and slide cartridge into place.
- Lower cartridge retainer over flange of cartridge until it locks in place.
- Push plunger forward until it rests against the back of the cartridge pistons.

III. Priming Procedure

PROPER PRIMING IS CRITICAL FOR PRODUCT PERFORMANCE!

- Hold sealant dispenser with mixing straw upright. Completely fill mixing straw by squeezing trigger of dispenser.



- Over suitable waste container, with mixing straw pointing upward at a 45° angle and resin side over hardener side, prime mixing element by dispensing one full trigger-pull of sealant into the waste container to remove air bubbles from the cartridge.
- Keeping the mixing straw pointing upward at a 45° angle, rotate the cartridge 180° so that hardener side is over resin side and dispense one more, full trigger-pull of sealant into the waste container to remove air bubbles from the opposite side of the cartridge.

IV. Dispensing Procedure

- Dispense sealant **immediately**, as sealants can begin to gel inside the mixing straw. If dispensing is halted for more than **30 seconds**, use a new mixing straw by removing the current mixing straw by rotating ¼-turn counter-clockwise and begin at step III.A with new mixing straw.
- Discard any unused sealant by dispensing sealant through mixing straw or hand-mixing prior to disposal.**

Discard cartridge if removed from original package more than 24 hours.

V. Cleanup Procedure

- To release plunger raise metal trigger release latch at back of the dispenser and hold in place. Pull plunger back as far as possible. Release the metal trigger release latch.
- Lift cartridge retainer to unlocked position.
- Slide cartridge out of dispenser. Discard cartridge according to standard shop procedures. If partial cartridge is to be reused, leave mixing straw in place to prevent moisture absorption.
- Wipe any sealant from dispenser. Suitable solvents include isopropyl alcohol, Skyclean™, or Citra-Safe™.

VI. Reuse Procedure

- Reuse partial cartridge within 24 hours only.**
- Remove previously used mixing straw by rotating straw ¼-turn counterclockwise, remove and discard according to standard shop procedures. **Repeat steps II.C through IV.A.**

Injectable Sealant Priming
Installation Video



Scan QR Code

